

DC-80

Diagnostic Ultrasound System

Insight, Intelligence, and more

X-Insight



A close-up, high-angle view of the control panel of a Mindray DC-80 ultrasound machine. The panel is dark gray and features a large, multi-touch trackball in the center, surrounded by numerous buttons and knobs. A full QWERTY keyboard is integrated into the lower part of the panel. The top of the panel has a control screen displaying various settings like 'iBeam', 'Dyn Ra.', 'Gray Map', and 'Test Map'. The 'X-Insight' logo is visible in the top left corner of the image.

X-Insight

Mindray's brand-new solution is an excellent transforming of continuous customer insights into clinical needs, combined with evolving cutting-edge ultrasound technologies. Full of vitality, with the goal of insight into the future and pursuit of the unlimitedness, it is constantly improving with increased scalability.

Overview

The best patient care is your ultimate goal. To achieve this requires confident diagnosis even with daily increases in patient throughput. Built on the foundation of Mindray's continuous efforts over the years and the inheritance from premium technology, the DC-80 with X-Insight is designed to help you manage your daily output with high efficiency, no matter what type patients and clinical challenges you will face.

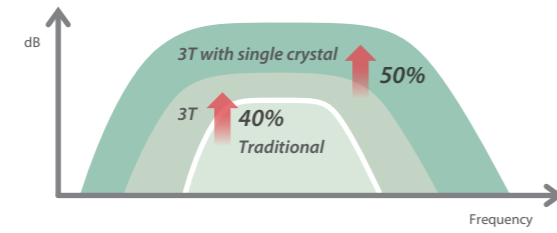


eXpress Clarity through premier transducers

Just place the transducer, and realize the images that you need. With continuous efforts to improve technology, Mindray ultrasound has been recognized worldwide for proven performance. Based on transducers with cutting-edge technology, the DC-80 with X-Insight can dramatically improve imaging capability across a wide range of applications.

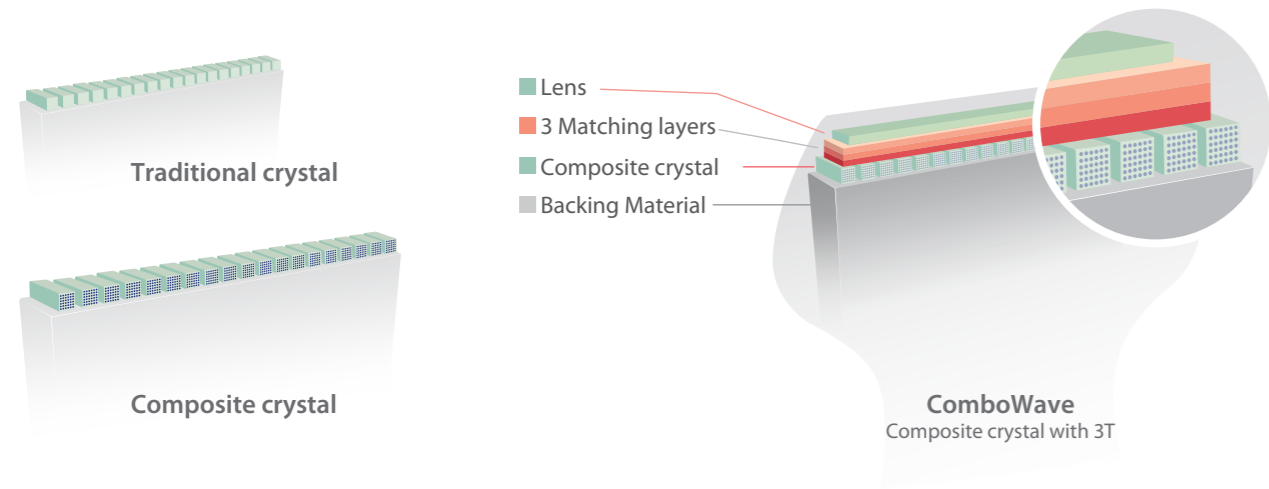
Single crystal transducers with 3T technology

Based on single crystal with Mindray unique 3T technology (Triple-matching layers, Total-cut design, Thermal control), the SC5-1E and SP5-1E provide a wider bandwidth to simultaneously offer better penetration and higher resolution, resulting in an optimum scanning solution for technically difficult patients.



ComboWave transducers

Compared with traditional transducers, ComboWave transducers utilize a new type of composite piezoelectric material to dramatically optimize the acoustic spectrum and reduce acoustic impedance. Further integrated with Mindray's unique 3T technology, the ComboWave transducers L12-3E, L14-5WE and L9-3E allow you to experience outstanding performance with extreme image resolution and uniformity in applications such as thyroid, breast, vascular, and more.



Ultra-light volume transducer with superior performance

The ultra-light and high-density volume transducer D8-2E offers superior obstetric imaging performance across 2D, color, and 3D/4D for more diagnostic confidence and patient care.

Dedicated interventional transducer

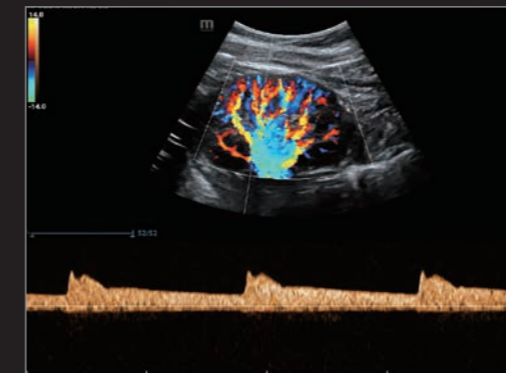
C6-2GE is a dedicated interventional transducer with outstanding 2D and CEUS image performance, optimum hand-fit design, minimum blind biopsy area, and professional needle-guided bracket with a coating of nanometer material for easy disinfection.

eXpress Clarity

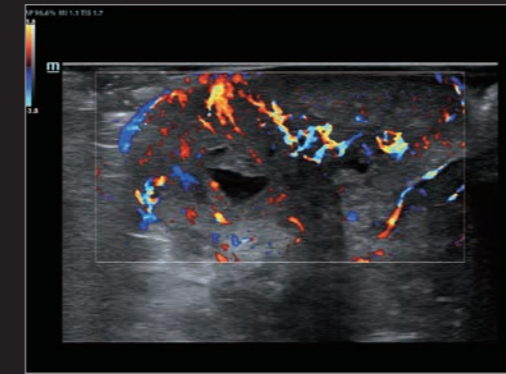
proven by exceptional images



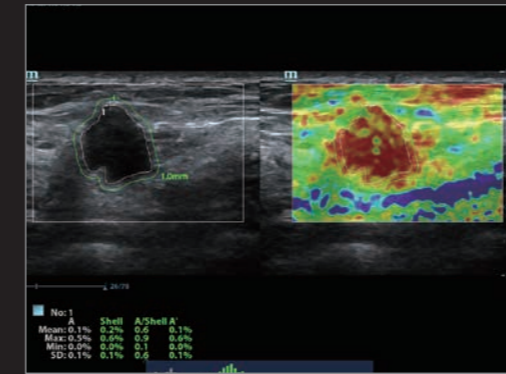
Gallbladder Polyp



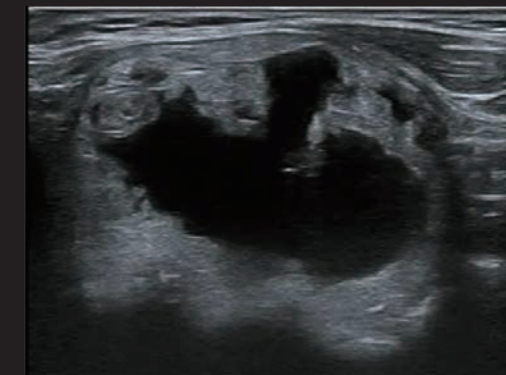
Duplex Kidney



HR Flow of Breast Tumor



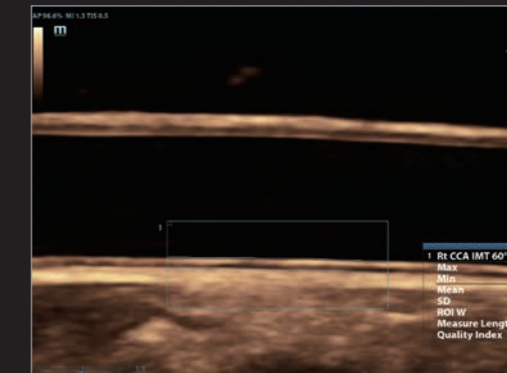
Shell Analysis of Breast Mass



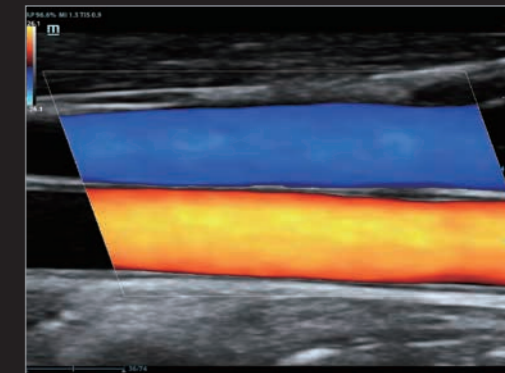
Thyroid Nodule



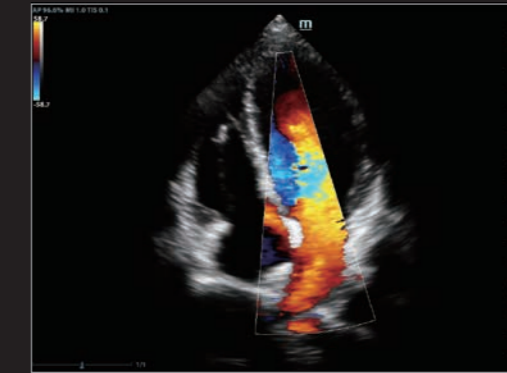
Testicle Infarction



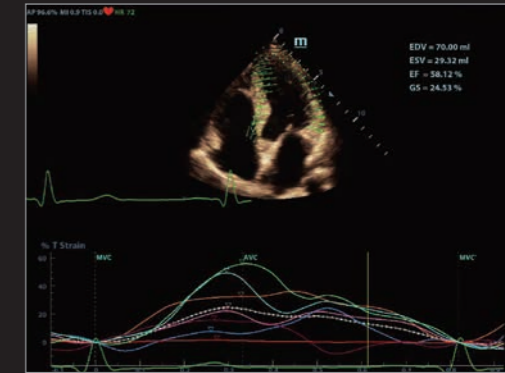
Auto IMT of CCA



CCA and Jugular Vein



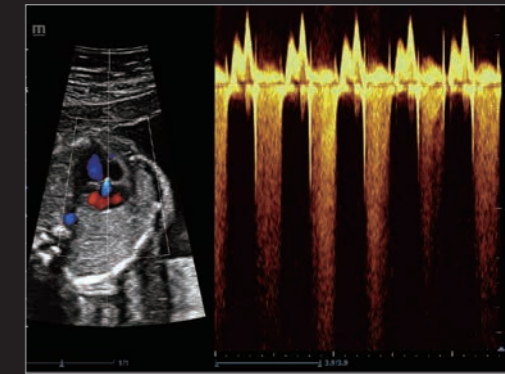
Four Chamber View



TT QA



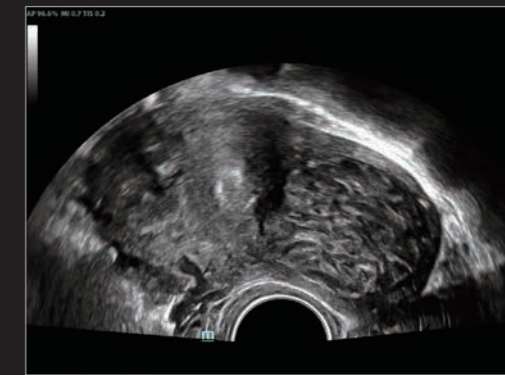
3D Fetal Face iLive



Fetal Heart Tricuspid Regurgitation



Fetal Hydronephrosis



Fibroid



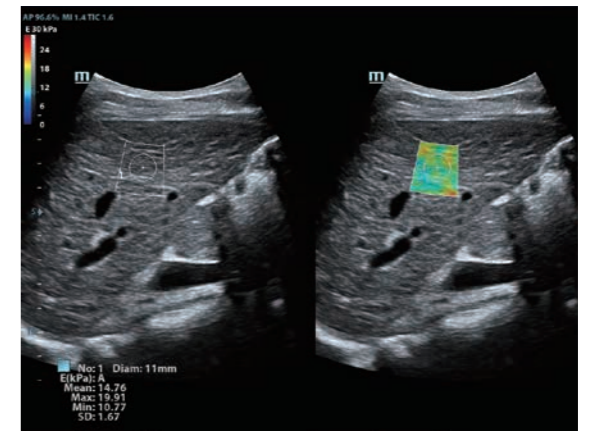
eXpress Clarity

for addressing diagnostic requirements

As an insightful solution, the DC-80 with X-Insight delivers outstanding performance with the most advanced capabilities for addressing your diagnostic requirements across a wide range of applications. This includes a complete elastography solution with best in class shear wave and strain elastography for tissue stiffness assessment, UWN⁺ CEUS and quantitative analysis tools for vascular perfusion analysis, Depth VR for vivid 3D/4D with depth perception, tissue tracking for regional myocardial analysis, and more.

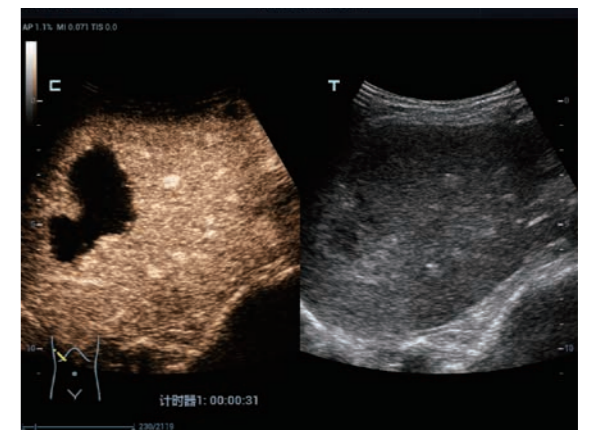
Complete Elastography Solution

The DC-80 with X-Insight delivers a complete elastography solution with best in class shear wave and strain technology. **Sound Touch Elastography (STE*)** with reliability map allows clinicians to get real-time 2D elastography and Young's modulus quantification for liver with high accuracy and reproducibility. **Sound Touch Quantification (STQ*)** with unique "E Avg" also enables real time and easy tissue stiffness quantification for hepatic fibrosis assessment with high reliability and stability. **Natural Touch Elastography** with a unique shell for tumor infiltration analysis provides high stiffness sensitivity in applications such as thyroid, breast, and GYN.



UWN⁺ CEUS

UWN⁺ (Ultra-Wideband Non-Linear Plus) CEUS enables the DC-80 with X-Insight to detect and utilize both 2nd harmonic and non-linear fundamental signals, generating images with significant enhancements, resulting in more sensitivity even with the minor signal, and longer agent duration with lower MI. The UWN⁺ CEUS is available for both superficial tissue and liver applications.



3D with Depth VR

Aided by an innovative new algorithm with depth information, 3D image with Depth VR provides an interactive lighting effect that generates more vivid rendering of images with depth perception.



* Please check the availability of this option in your region with Mindray representatives.

eXceptional Intelligence

leading the clinical trend

Intelligence throughout whole exams!

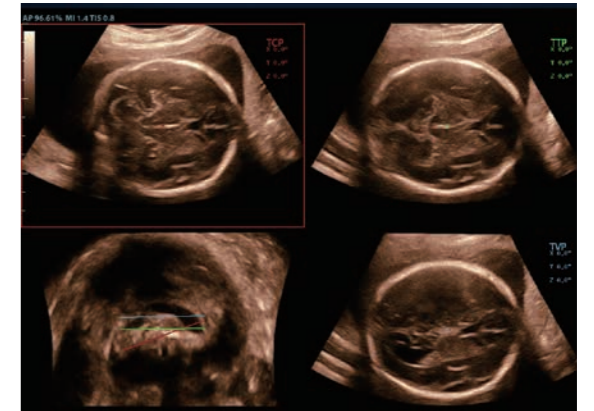
The customer voice is extremely strong in improving scanning efficiency, consistency, and accuracy. Now the DC-80 with X-Insight just thinks from your viewpoint and delivers leading intelligence from acquisition to calculation, and from image optimization to exam protocol, with technology such as Smart Planes CNS, Smart FLC, Smart OB/NT, Smart Track, Auto EF, iTouch, and iWorks.



Smart Planes CNS

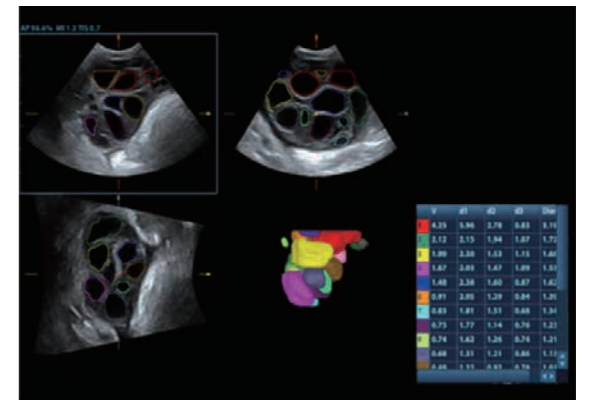
Migrating Mindray's exclusive pioneering technology from the premium product, the DC-80 with X-Insight provides fully automatic and accurate detection of the most significant planes and frequently-used measurements of fetal CNS, leading to an intelligent diagnosis, improved throughput, and reduced user dependency.

Smart Planes CNS is a user-friendly tool that greatly improves scanning efficiency through increased accuracy coupled with automated operation. With a simple button-click on a 3D fetal brain volume image, the standard CNS scanning planes (MSP, TCP, TTP and TVP) and a range of related anatomical measurements (BPD, HC, OFD, TCD, CM and LVW) are obtained immediately.



Smart FLC

Smart FLC automatically detects the number of follicles and calculates each volume from a 3D ovarian volume image, assuring accurate assessment of follicles, especially with IVF exams.



Smart Track

Smart Track is Mindray's unique ultrasound feature to reduce repetitive, time-consuming scanning steps in vascular exams. By intelligent tracking of vessels, it can automatically adjust the ROI position and steering angle of Color/Power, and PW sample volume position, size and correction angle during real-time scanning.



eXceeding Experience

beyond your expectation

Inspired innovation is driven by clinical needs. The DC-80 with X-Insight is focused on what matters to you and refines your user experience with better ergonomics, easier scanning, and flexible management, even beyond your expectations.



Unique dual-wing floating arm with 21.5" monitor

Mindray's exclusive dual-wing delivers an unlimited-angle floating design for extremely flexible monitor positioning, adapting to clinical needs. The folded dual-wing also minimizes system body height for easy transportation.

12.1" Tilting multi-gesture touch screen

Powerful gesture-based operation opens up a new trend in cart-based ultrasound with an agile, smart, and intuitive user experience beyond your expectations.

Interactive ultrasound APP --- MedTouch

MedTouch is a one-stop solution for a smarter way to control ultrasound devices, and access patient data and inbuilt tutorial software via your IOS/Android operated smart devices.

Envision more with X-Insight to understand you, think with you, and design for you

The future of patient care and clinical requirements are vastly changing. With ultrasound technology evolving, Mindray is listening to you, understanding your clinical needs, and providing you with the most advanced clinical solutions.